

Birley Site Expansion 2006-2007

January 2007



On Friday 19th January we received 2 loads of the new sizer. Both vehicles carried over dimensional loads which required pilot vehicles.



The main part of the new packhouse extension is finished. The Amenities block framework and roof is completed. Contractors have started onsite preparing the new car park and the remainder of the roading.



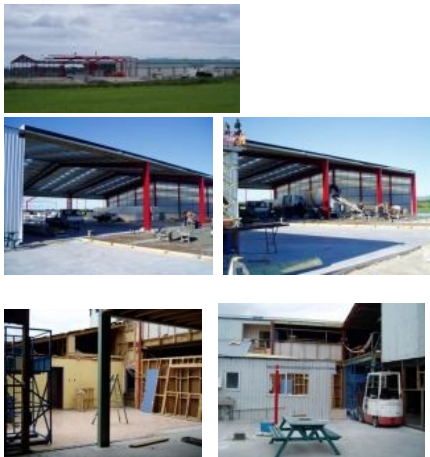
On Monday 22nd January Compac technicians are starting onsite to install the sizer and will have the new machine operational by 1st March.

The new coolstore has been erected and the refrigeration equipment has started to be installed and should be completed by end of January.

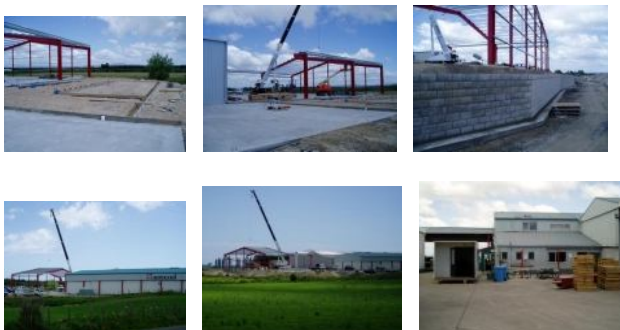
Building has now started on the new curing canopy and the remainder of the outside yard work is underway.

2006

December



November





October

